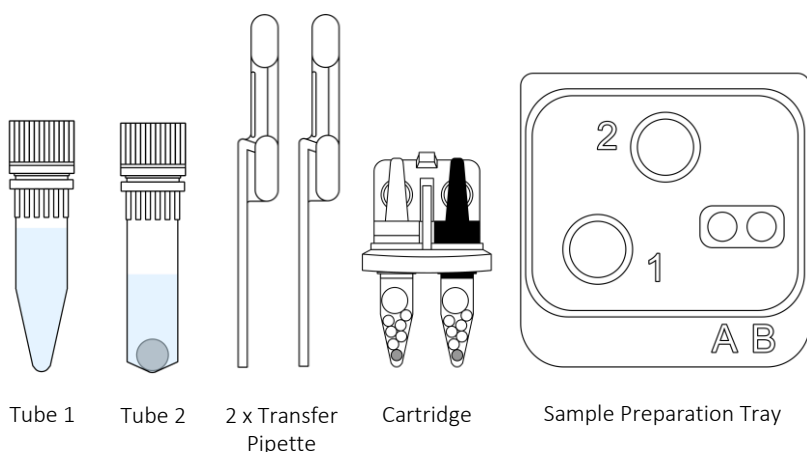


SARS-CoV-2

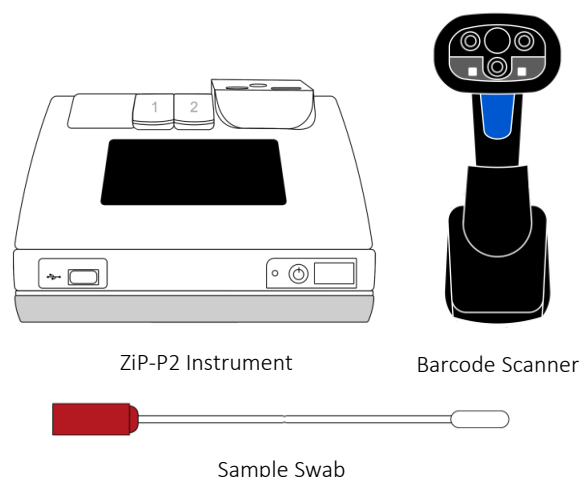
ZiP-CoVx-P2

Quick Reference Guide

Materials Required (Provided)



Materials Required (Not Provided)



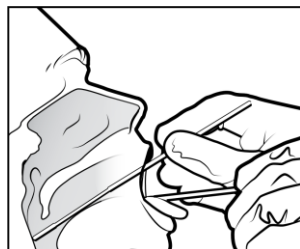
Refer to the ZiP-CoVx-P2 Instructions for Use (www.zipdiag.com) for complete instructions.

Sample Collection, Handling, Transport and Storage

ZiP-CoVx-P2 is intended for testing combined oropharyngeal and bilateral mid-turbinate swab samples. Only dry swabs can be used. Once swabs have been collected, store between 2°C to 30°C and test within 72 hours.

Step 1:

Wash or sanitise hands before and after collecting samples.



Step 2:

Take the swab out of the sheath or packet.

Tilt patient head back and ask them to stick out their tongue.

If necessary, use a tongue depressor to hold down the back of the tongue to expose the tonsil area.

Without touching sides of the mouth or tongue, gently scrape the back of the throat, uvula, and tonsil area.

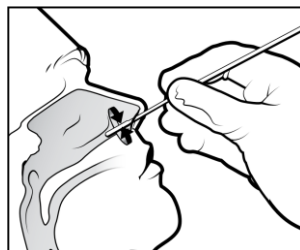
Take the swab out without touching any other parts of the mouth.

Step 3:

With the patient's head still tilted back, rotate the swab, and insert it approximately 2 cm into the nostril until resistance is met at turbinates.

Rotate the swab several times against the nasal wall.

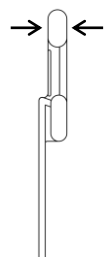
Repeat in the other nostril using the same swab.



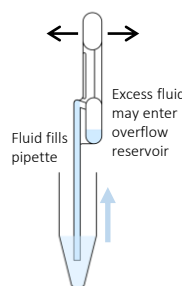
How to Use the Pipette (video available on www.zipdiag.com)

To take up fluid:

With the pipette tip outside fluid, squeeze top bulb

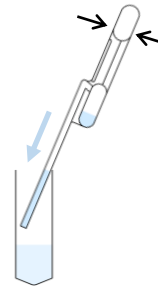


Immerse pipette tip in fluid and release top bulb

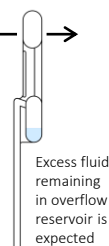


To dispense fluid:

Place pipette tip against tube wall, squeeze top bulb



With the pipette tip outside fluid, release top bulb



Technical Support

If the test does not perform as expected, contact ZiP Diagnostics technical support:

Phone +61 (0) 3 8414 5770 | **Email** support@zipdiag.com
www.zipdiag.com/technical-support



ZiP Diagnostics Pty Ltd

24 Cromwell St, Collingwood, Victoria, 3066, Australia

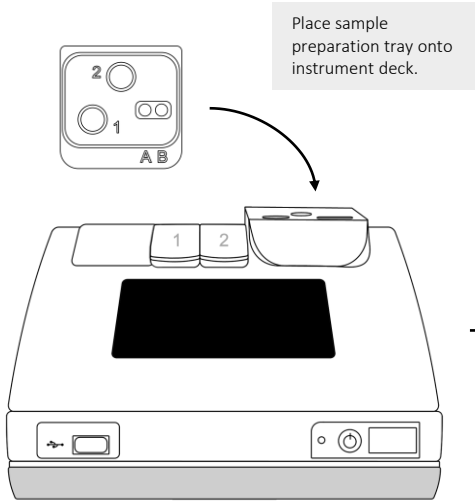
Phone +61 (0) 3 8414 5770 | **Email** support@zipdiag.com
www.zipdiag.com

© 2022 ZiP Diagnostics Pty Ltd. All rights reserved.
 D008230 v1 (Nov 2022)

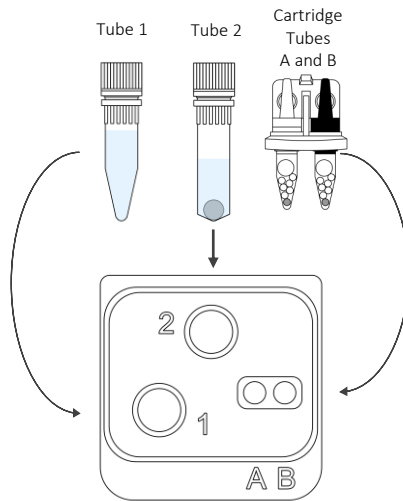
SARS-CoV-2 ZIP-CoVx-P2 Quick Reference Guide

Refer to the ZIP-CoVx-P2 Instructions for Use for complete instructions.
Follow the step-by-step prompts displayed on the instrument screen.

1

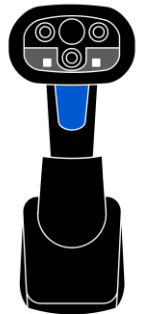


Load tubes onto sample preparation tray.
Ensure tubes are seated all the way down.

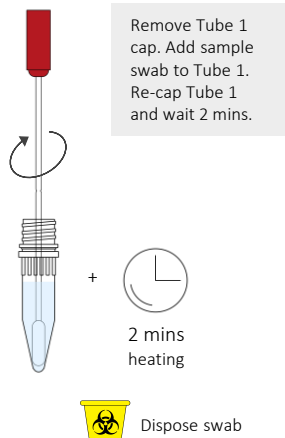


2

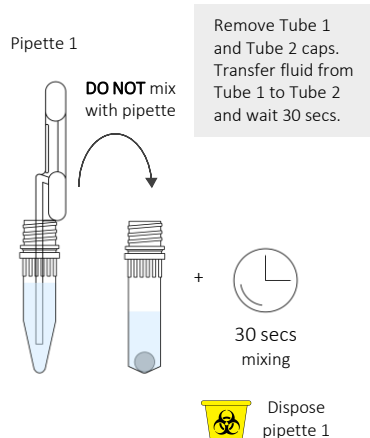
Scan barcode on the cartridge (Cartridge ID).
Manually type or scan Sample ID.



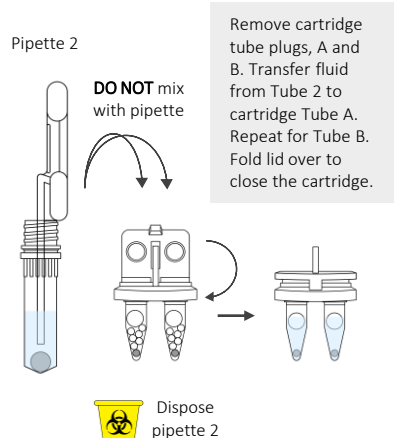
3



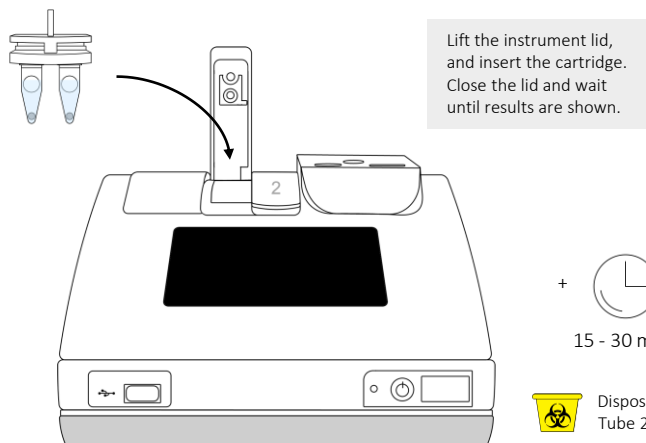
4



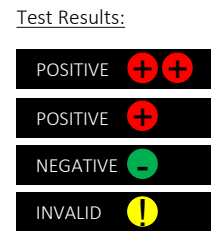
5



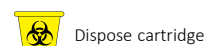
6



7



If INVALID result, repeat procedure. **DO NOT** reuse any parts from the first test.



Return to Step 1 to start a second test.