



## ZiP-P2 Instrument

### Key features:

- Deployable at point-of-care settings
- Decentralised diagnosis
- Integrated sample preparation
- Screen-guided easy-to-use workflow with automated results and reporting



## Use with ZiP Diagnostics Tests\*

### Human Health Solutions

- Respiratory viruses: SARS-CoV-2, Flu A, Flu B and RSV
- Blood-borne viruses: Hepatitis B, Hepatitis C and HIV
- Sexually transmitted diseases: Chlamydia trachomatis and Neisseria Gonorrhoeae
- Mosquito-borne diseases: Malaria, Ross River, Japanese encephalitis, dengue and others

### Animal Health Solutions

- Emergency Animal Diseases
- Companion and Livestock Animal Diseases



\* TEST MENU IS UNDER DEVELOPMENT

# Product Specifications

## Intended Use

The ZiP-P2 instrument is a portable electronically powered diagnostic analyser used exclusively with ZiP Diagnostics human health and animal health tests. Together with these tests, the instrument provides high-sensitivity molecular results to aid the diagnosis of or to screen for a range of diseases. The instrument is intended for use in dedicated test spaces by healthcare professionals, or in pathology settings by laboratory-trained professionals, or with approved institutions to support validation testing.

## Onboard Technology

The ZiP-P2 instrument utilises isothermal nucleic acid amplification technology to detect RNA or DNA in a clinical specimen as a fluorescent signal. The instrument also provides defined areas for sample preparation with integrated heating and mixing options.

## Physical Specifications

Dimensions: Width 185 mm (7.28”), Depth 205 mm (8.07”), Height 122 mm (4.80”).

Weight: 2.3 kg (5.1 lb).

Power: 12V DV, 3.0 Amps from an external supplied plug pack. Power supply adaptor is configured for different regions.

## Operating Environment

Indoor use only. 10°C to 30°C, 20% to 80% RH (non-condensing), 0 to 2000 m altitude.

## Interface and Connectivity

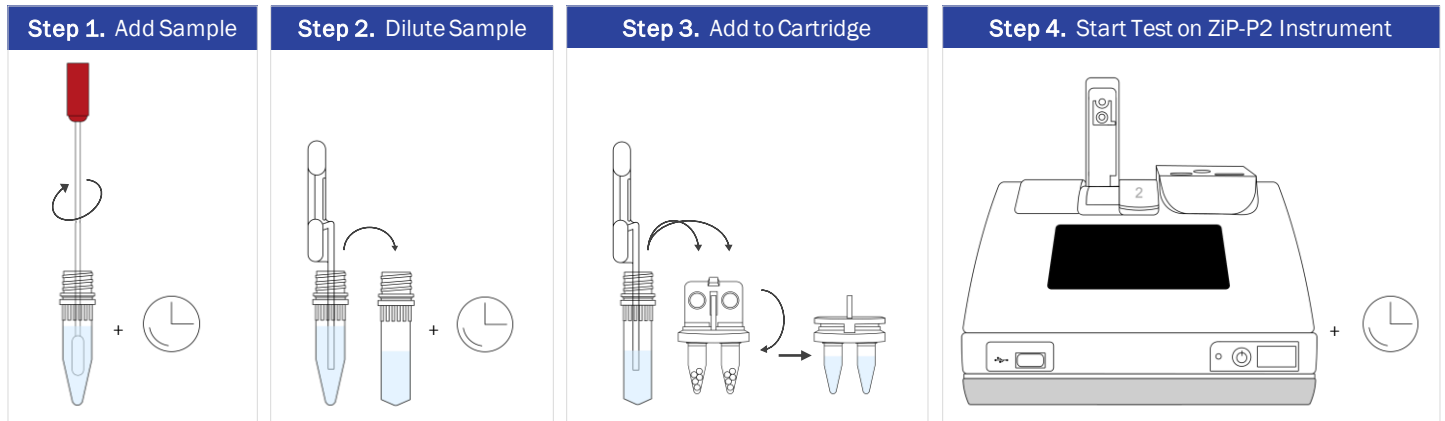
Colour LCD display, capacitive touch screen, 4.3”. Colour icon driven menus and user prompts.

Instrument ports; USB port (1) for data export, software update and test types import; Serial port (2) for label printer and barcode reader; Ethernet RJ45 port (1) for HL7/LIS network connectivity.

## Test Workflow

Simple 4 step process, guided by on-screen instructions. Minimal training required.

Runs up to two cartridges at one time, random access.



## Test Results

Results are interpreted automatically by the ZiP-P2 instrument and shown on-screen.

This instrument reports qualitative results only: POSITIVE, NEGATIVE or INVALID.



THIS PRODUCT IS NOT AVAILABLE FOR PURCHASE BY THE GENERAL PUBLIC  
THIS PRODUCT IS NOT COMMERCIALY AVAILABLE IN ALL MARKETS  
ALWAYS FOLLOW THE DIRECTIONS FOR USE



**ZiP Diagnostics Pty Ltd**

24 Cromwell St, Collingwood, Victoria, 3066, Australia

Phone +61 (0) 3 8414 5770 | Email info@zipdiag.com

© 2023 ZiP Diagnostics Pty Ltd. All rights reserved.

D008367 v1.1 (Feb 2024)

