



ZiP-P2 Instrument

Key features:

- Deployable at point-of-care settings
- Decentralised diagnosis
- Integrated sample preparation
- Screen-guided easy-to-use workflow with automated results and reporting



Use with ZiP Diagnostics Tests*

Animal Health Solutions

- **Companion animal diseases:** FIV, FeLV, canine distemper, parvovirus, equine herpes, equine influenza and strangles
- **Production animal diseases:** Bovine viral diarrhoea, classical swine fever, and porcine reproductive and respiratory virus
- **Emergency animal diseases:** Foot-and-mouth, lumpy skin, African swine fever, avian influenza and Hendra

Human Health Solutions

- Respiratory viruses
- Sexually transmitted diseases
- Blood-borne viruses
- Mosquito-borne diseases



* TEST MENU IS UNDER DEVELOPMENT

Product Specifications

Intended Use

The ZiP-P2 instrument is a portable electronically powered diagnostic analyser used exclusively with ZiP Diagnostics animal and human health tests. Together with these tests, the instrument provides high-sensitivity molecular results to aid the diagnosis of or to screen for a range of diseases. The instrument is intended for use in dedicated test spaces by healthcare professionals, or in pathology settings by laboratory-trained professionals, or with approved institutions to support validation testing.

Onboard Technology

The ZiP-P2 instrument utilises isothermal nucleic acid amplification technology to detect RNA or DNA in a clinical specimen as a fluorescent signal. The instrument also provides defined areas for sample preparation with integrated heating and mixing options.

Physical Specifications

Dimensions: Width 185 mm (7.28"), Depth 205 mm (8.07"), Height 122 mm (4.80").

Weight: 2.3 kg (5.1 lb).

Power: 12V DV, 3.0 Amps from an external supplied plug pack. Power supply adaptor is configured for different regions.

Operating Environment

Indoor use only. 10°C to 30°C, 20% to 80% RH (non-condensing), 0 to 2000 m altitude.

Interface and Connectivity

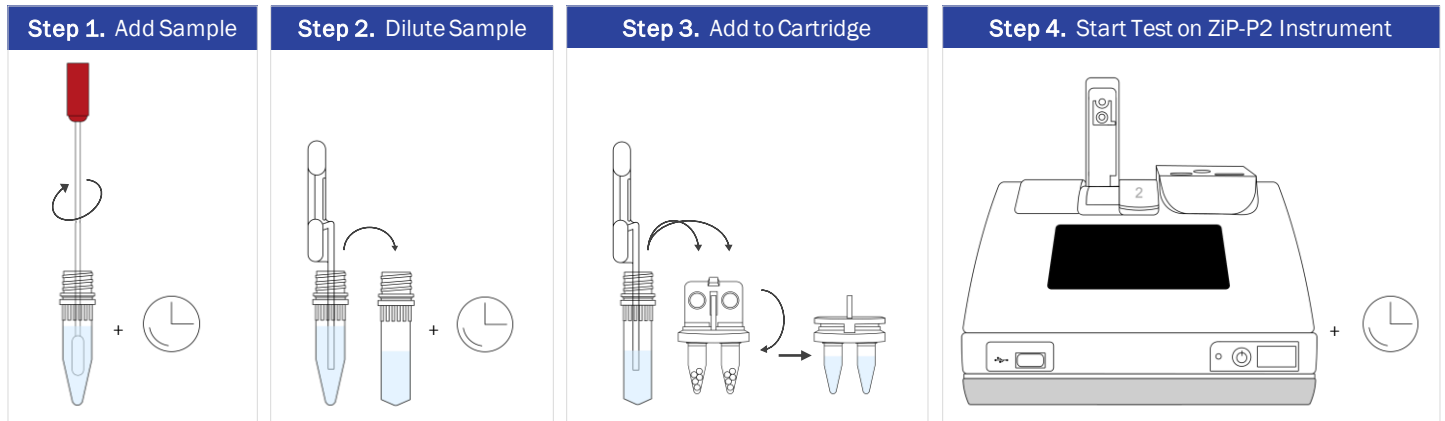
Colour LCD display, capacitive touch screen, 4.3". Colour icon driven menus and user prompts.

Instrument ports; USB port (1) for data export, software update and test types import; Serial port (2) for label printer and barcode reader; Ethernet RJ45 port (1) for HL7/LIS network connectivity.

Test Workflow

Simple 4 step process, guided by on-screen instructions. Minimal training required.

Runs up to two cartridges at one time, random access.



Test Results

Results are interpreted automatically by the ZiP-P2 instrument and shown on-screen.

This instrument reports qualitative results only: POSITIVE, NEGATIVE or INVALID.



THIS PRODUCT IS NOT AVAILABLE FOR PURCHASE BY THE GENERAL PUBLIC
THIS PRODUCT IS NOT COMMERCIALY AVAILABLE IN ALL MARKETS
ALWAYS FOLLOW THE DIRECTIONS FOR USE



ZIP Diagnostics Pty Ltd

24 Cromwell St, Collingwood, Victoria, 3066, Australia

Phone +61 (0) 3 8414 5770 | Email info@zipdiag.com

© 2023 ZiP Diagnostics Pty Ltd. All rights reserved.

D008615 v1.1 (Feb 2024)

